



# Starter Screed™

**A Full Functioning Weep  
Screed with a Universal  
Design For Stucco, Manufactured  
Stone and Thin Brick**



## Key Properties

- Full length stucco key
- High flow weep ports will match flow rates of water intrusion
- Adapts to most construction designs
- Unique weep slot design
- High impact and UV resistant
- Directs water away from foundation
- Meets ASTM D 1784 and D4216

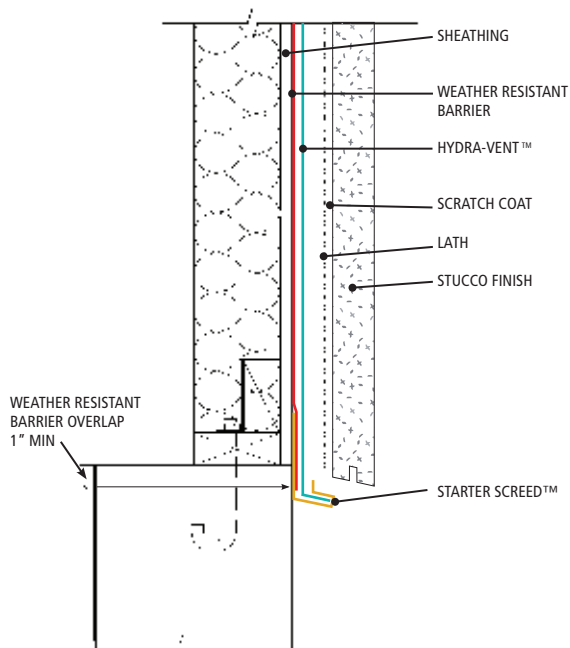
## Instructions

- Place starter screed a minimum of 4" above grade or 2" above paved areas.
- Fasten starter screed through sheathing and into wall studs.
- **IMPORTANT**, Hydra-Vent and lath should overlap nailing flange of screed.
- Slide bottom section of Hydra-Vent or WRB into starter screed weep slot.
- **Do not** plug weep ports on leading edge of screed with stucco mix.
- Score underside groove and remove back leg of screed for flush sheathing application or termination bead.

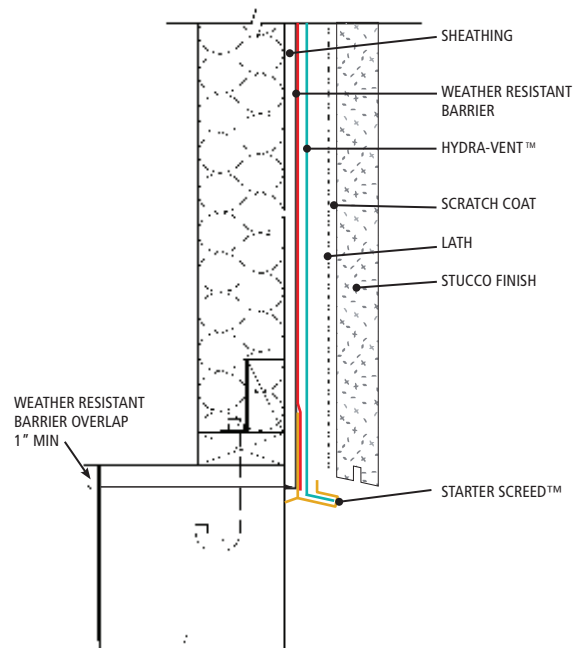


Drawings Have Been Expanded For Clarity

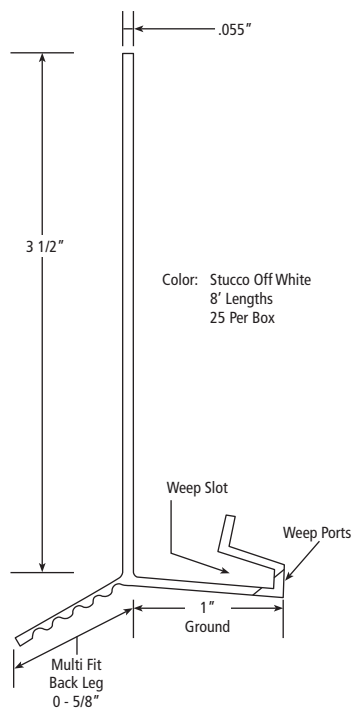
**STUCCO WALL TO FOUNDATION TERMINATION**  
(EXTERIOR SHEATHING IS FLUSH WITH FOUNDATION)



**STUCCO WALL TO FOUNDATION TERMINATION**  
(EXTERIOR SHEATHING IS OVER FOUNDATION)



**STARTER SCRED**



**WALL TO FOUNDATION TRANSITION**  
DRAWING HAS BEEN EXPANDED FOR CLARITY

