



Hydra-Vent™

Water Resistant Barrier and Active Drainage Plane Combined For Manufactured Stone, Stucco and Thin Brick

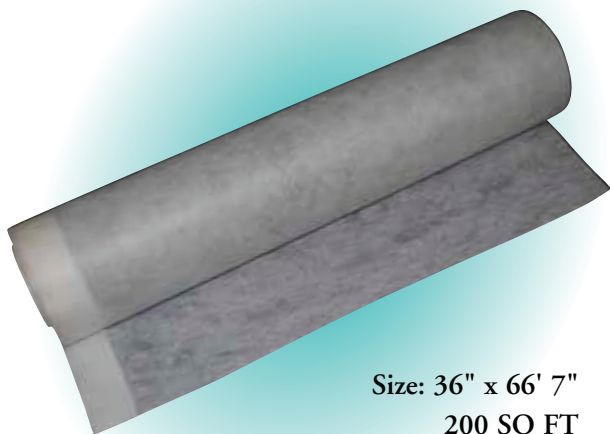
Key Properties

Active Drainage Plane

- Quickly transports water to flashings and screed exit points
- Creates a capillary break to equalize pressure within the wall unit
- Will not clog with mortar
- Will not support mold growth

Polymeric Water Resistant Barrier

- Allows water vapor to escape from interior walls
- Reduces the loss of heated or cooled air from the wall cavity
- Resistant to chemicals, cleaners and cedar oil
- ICC-ES Meets AC38 (ESR-2235)



Size: 36" x 66' 7"
200 SQ FT

Benefits

- One step installation of water resistant barrier and drainage plane
- Installs like conventional water resistant barriers
- No need for thickness shimming around doors and windows
- No need to install insect barrier

Installation

- Grey fabric faces out.
- Apply first water resistant barrier according to local codes.
- Apply Hydra-Vent™ **after** installation of doors, windows and related flashings.
- Starting at the bottom horizontal course install Hydra-Vent™ with grey fabric facing out and 3" overlapping edge at the top, fasten with staples or nails according to local building codes.
- Trim Hydra-Vent™ around windows, doors, vents and penetrations.

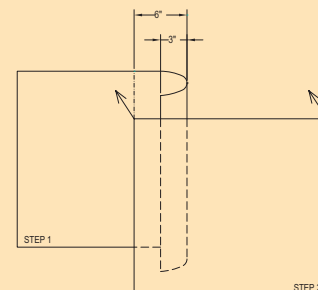
Corners

- Start Hydra-Vent™ a minimum of 12" away from corners.
- Install lath on top of Hydra-Vent™ for stucco, stone or thin brick applications.

Vertical Laps

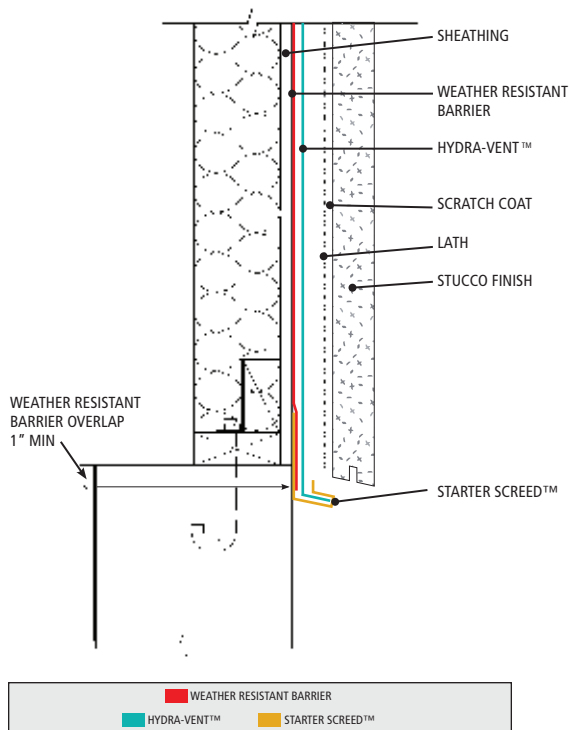
Step 1 Fold the ending vertical section of Hydra-Vent™ onto itself a minimum of 3" and staple.

Step 2 Continue with next roll of Hydra-Vent™ vertically lapping previous fold 6".

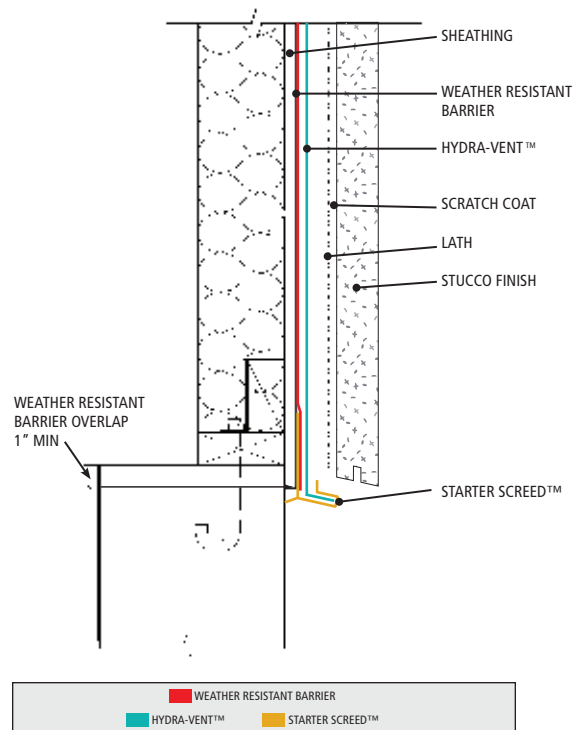


Drawings Have Been Expanded For Clarity

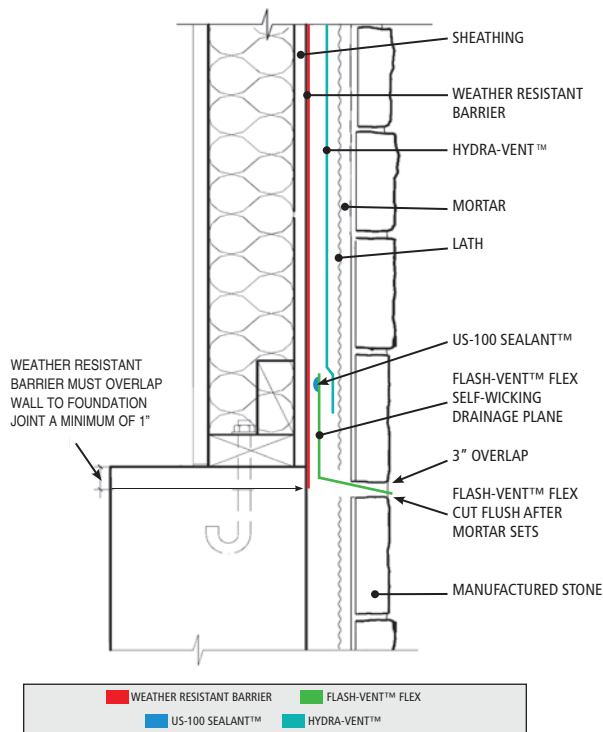
STUCCO WALL TO FOUNDATION TERMINATION
(EXTERIOR SHEATHING IS FLUSH WITH FOUNDATION)



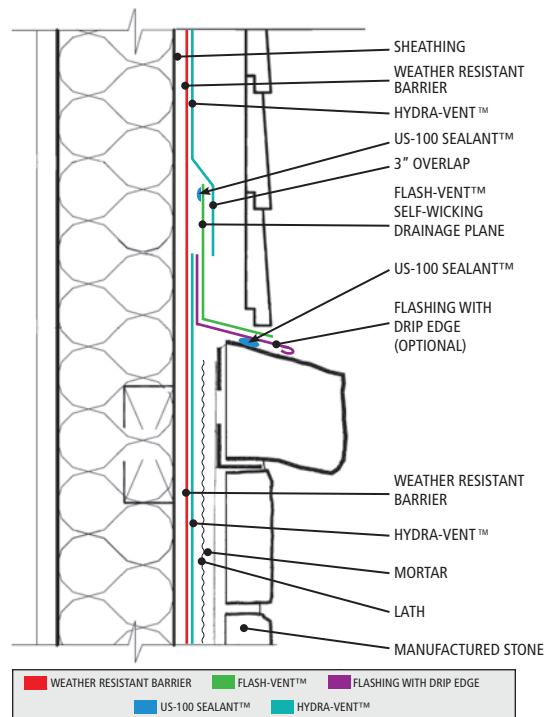
STUCCO WALL TO FOUNDATION TERMINATION
(EXTERIOR SHEATHING IS OVER FOUNDATION)



WALL TO FOUNDATION TRANSITION



CLADDING TRANSITION



To learn more or place an order, call your nearest dealer or York at 1-800-551-2828.