



YorkShield 106 TS™

Laminated Copper Termite Barrier

Keep termites out.
Put YorkShield 106 TS™ in.

Key Properties

- Provides superior protection against termites and other insects
- Compatible with ACQ, CCA, MCQ, CA, & SBJ/DOT for pressure-treated lumber, which include ground contact wood
- Asphalt-free, **will not stain** concrete, vinyl or wood
- Compatible with all adhesives, caulks and sealants
- Thermal stability to 275°F



Since January 1, 2004, the EPA has mandated that pressure-treated lumber be arsenic-free. But the ACQ treatment replacing arsenic-based chemical preservatives contains a higher level of copper... causing a galvanic reaction that will corrode, degrade, and destabilize the integrity of aluminum flashing. That's why you need YorkShield 106 TS™



ACQ treatment corrodes aluminum flashing



YorkShield 106 TS copper flashing won't corrode with ACQ treatment

More YorkShield 106 TS™ Advantages:

- Everlam™ technology enables polymer layer that seals around fasteners to form a protective barrier
- Flexible and easy to use on foundations and basement posts
- Warranted for the life of the building*

Flashings

Description

YorkShield 106 TS™ is a copper termite barrier solution, made of a single sheet of 2 oz. copper and a tough polymer layer, laminated with 100% rubber adhesive. This composite material is supplied in 60' rolls, 8", 10" or 12" wide.

The copper is flexible, easily formed on-site and the rubberized laminate offers excellent protection from the chemically-treated wood. Unlike aluminium termite shields, YorkShield 106 TS will not corrode or degrade when exposed to ACQ and other treatments.

Tested

The product has been tested and proven compatible with ACQ treated woods by Chemical Specialties Inc. of Charlotte, NC., a manufacturer of ACQ treatment chemicals.

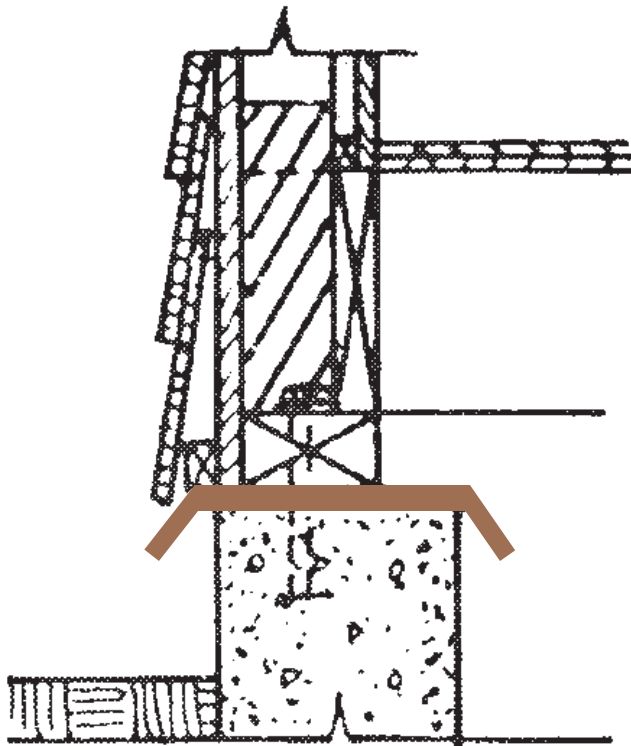
Installation Notes

Install YorkShield 106 TS between the foundation and the sill plate with the copper side up. The foundation and sill surfaces should be as smooth as is practical to avoid puncturing the barrier during installation.

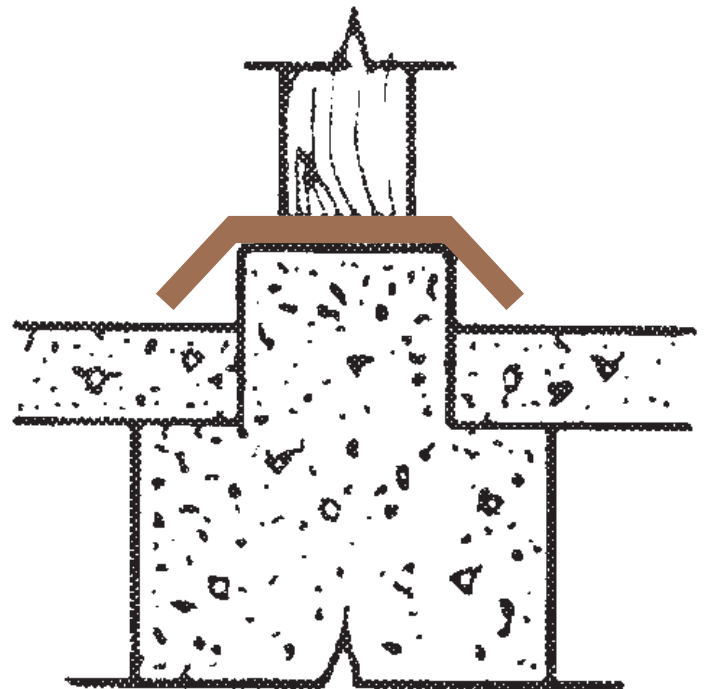
Cut pieces as long as possible to minimize joints. Lap joints 6" to ensure there are no gaps that could enable termite access. The edge of flashing should extend approximately 2" beyond the edge of the foundation, and turned down at a 45° angle. It is recommended that all penetrations and laps are sealed with mastic or caulk, as termites require as little as 1/64" to gain access.

Note: polymer layer is an integral part of the composite material and should not be removed.

YORKSHIELD 106 TS™ SHOULD BE USED AS A TERMITE SHIELD ONLY, NOT AS FLASHING. FOR FLASHING APPLICATIONS, USE OUR YORKSHIELD 106 PT OR YORKSHIELD 106 HP FLASHING PRODUCTS.



Foundation



Basement Post