



Starter Screed™

A Full Functioning Weep
Screed with a Universal
Design For Stucco,
Manufactured Stone and
Thin Brick



Key Properties

- Full length stucco key
- High flow weep ports will match flow rates of water intrusion
- Adapts to most construction designs
- Unique weep slot design
- High impact and UV resistant
- Directs water away from foundation
- Meets ASTM D 1784 and D4216

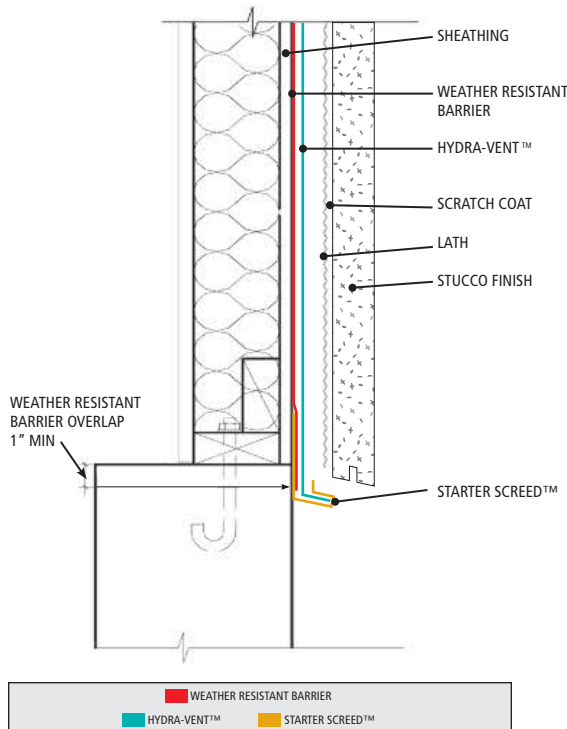
Instructions

- Place starter screed a minimum of 4" above grade or 2" above paved areas.
- Fasten starter screed through sheathing and into wall studs.
- **IMPORTANT**, Hydra-Vent and lath should overlap nailing flange of screed.
- Slide bottom section of Hydra-Vent or WRB into starter screed weep slot.
- **Do not** plug weep ports on leading edge of screed with stucco mix.
- Score underside groove and remove back leg of screed for flush sheathing application or termination bead.

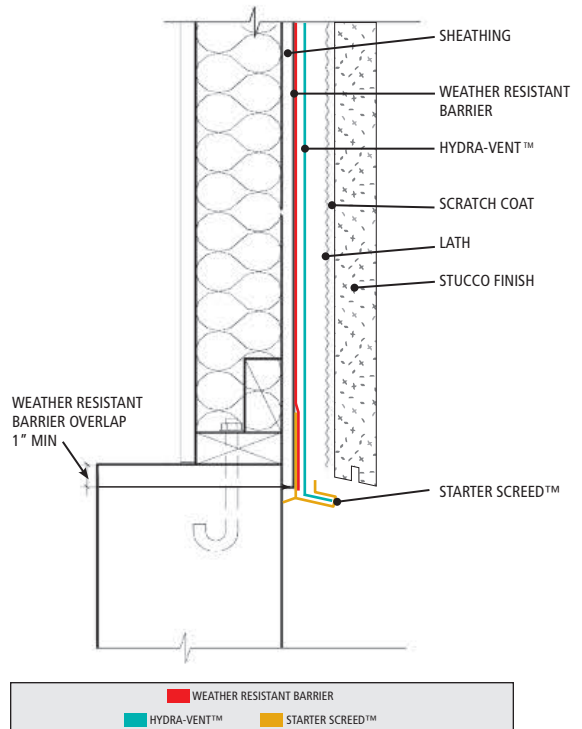


Drawings Have Been Expanded For Clarity

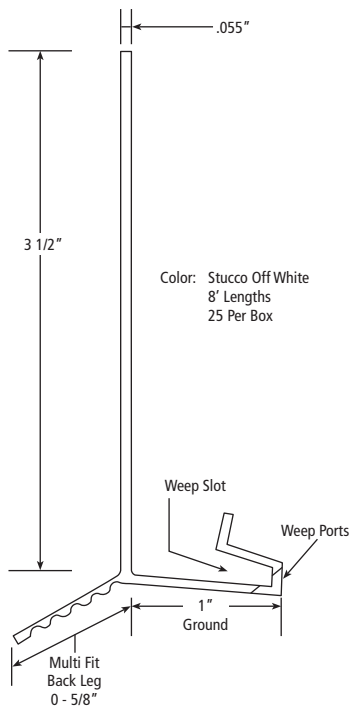
STUCCO WALL TO FOUNDATION TERMINATION
(EXTERIOR SHEATHING IS FLUSH WITH FOUNDATION)



STUCCO WALL TO FOUNDATION TERMINATION
(EXTERIOR SHEATHING IS OVER FOUNDATION)



STARTER SCREED



WALL TO FOUNDATION TRANSITION

DRAWING HAS BEEN EXPANDED FOR CLARITY

