



# Flash-Vent™

## Manufactured Stone, Stucco, and Thin Brick Drainage System

### Key Properties

- Stainless steel flashing and drainage plane
- Will not clog with mortar
- Easily formed to make end dams
- Anti microbial
- Wicking fabric matches grey mortar
- Low profile and non staining
- Easy to install
- 90% recycled product ♻️
- Life of the wall warranty



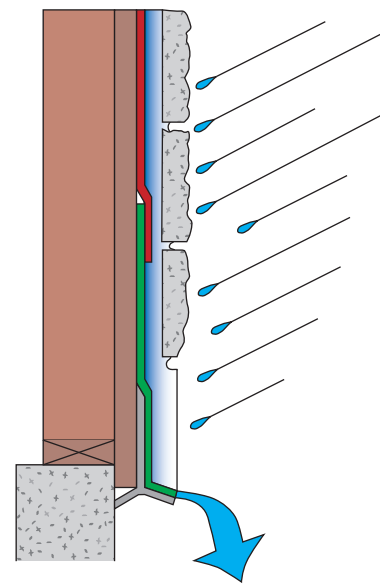
### Applications

- All exterior veneer penetrations and terminations
- Wall to foundation transitions
- Window sills and headers
- Deck terminations
- Cladding transitions to stone, stucco or thin brick
- Columns and wall bases
- Above ground stucco or plaster terminations

### Installation

- Install **Flash-Vent™** with soft fabric side facing out.
- Apply a 3/8" bead of **US-100™** sealant on the back side of **Flash-Vent™** at or near top edge.
- Place **Flash-Vent™** on top of first weather resistant barrier (WRB) and staple or fasten near top edge.
- Lap second WRB a minimum of 3" over **Flash-Vent™** concealing fasteners.
- If needed continue second WRB from under **Flash-Vent™** downward.
- Bring **Flash-Vent™** out to the exterior edge of the veneer and trim if needed.

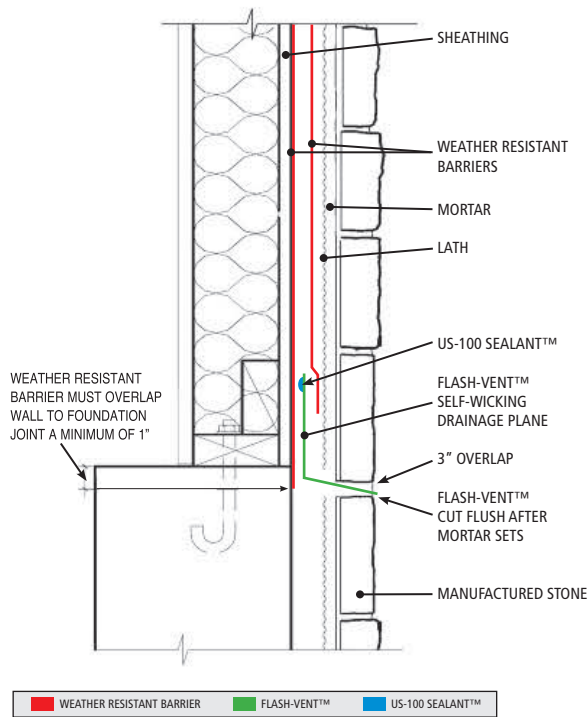
(See drawings on reverse side)



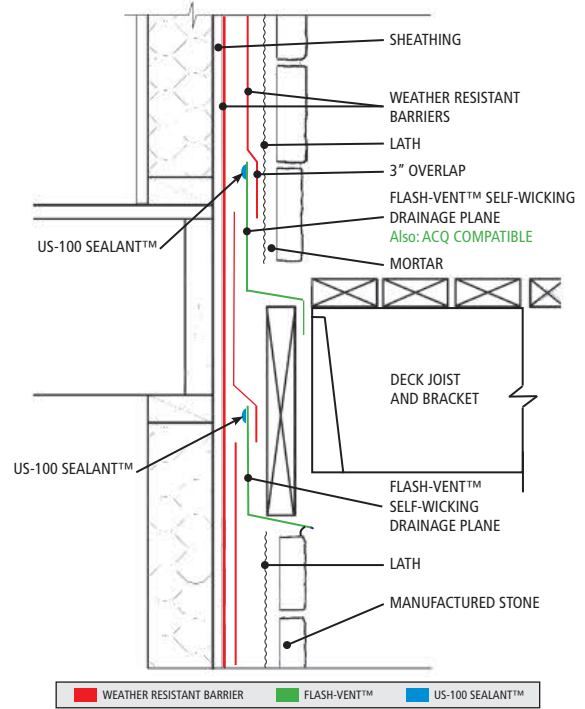
Available in:  
12", 18", 24", and 36" x 40'

Drawings Have Been Expanded For Clarity

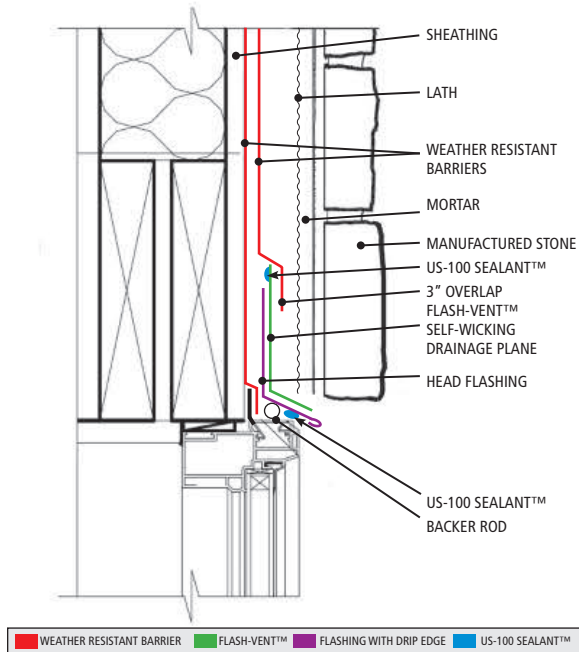
WALL TO FOUNDATION TRANSITION



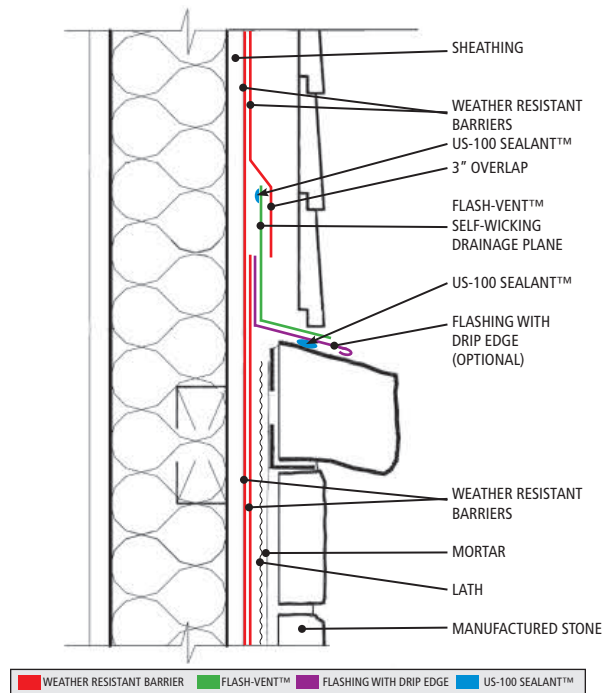
DECK TERMINATION



WINDOW HEAD



CLADDING TRANSITION



To learn more or place an order now, call your nearest dealer or York at 1-800-551-2828

