



Product Submittal

Multi-Flash™ 316 SS

Description

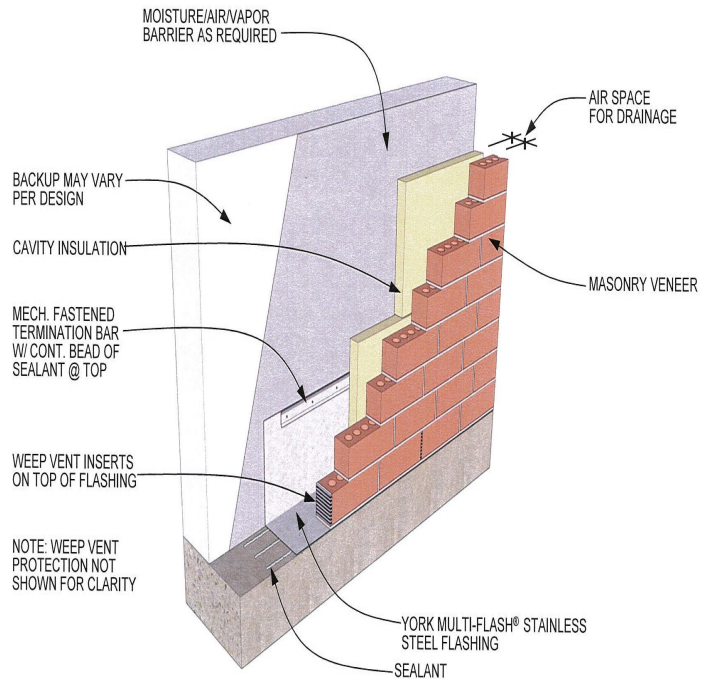
Stainless Steel Fabric flashing is a full, single sheet of 316 stainless steel (ASTM A240) bonded on one side to a layer of polymeric fabric. Multi-Flash SS has a life of the wall warranty.

Description & Benefits:

- Best in class puncture resistance
- Mold resistant: passes ASTM D3273
- Fire resistant: passes ASTM E84, Class A
- Life of the wall warranty
- Compatible with:
 - Air barriers
 - Spray Polyurethane Foam
 - Insulation Boards
 - Construction sealants

Stainless Steel:

- Made of 60% post-consumer recycled stainless steel
- Recyclable
- Thickness 2 mils stainless steel, 10 mils overall thickness



Accessories:

- | | |
|--|--|
| <input type="checkbox"/> UniverSeal US-100 Sealant | <input type="checkbox"/> York 316 Self-Adhering Tape |
| <input type="checkbox"/> T-96 Termination Bar | <input type="checkbox"/> 316 Stainless Steel Drip Edge |
| <input type="checkbox"/> 316 SS Termination Bar | <input type="checkbox"/> Drip Edge 316 Stainless Steel Outside Corners |
| <input type="checkbox"/> Term-Clamp™ | <input type="checkbox"/> Drip Edge 316 Stainless Steel Inside Corners |
| <input type="checkbox"/> 316 Stainless Steel Outside Corners | <input type="checkbox"/> Stainless Steel Weep Vents |
| <input type="checkbox"/> 316 Stainless Steel Inside Corners | <input type="checkbox"/> Weep-Net™ |
| <input type="checkbox"/> 316 Stainless Steel End Dams | <input type="checkbox"/> Weep Armor™ |

Submittal Date: _____ Bid Date: _____

Project: _____

Project Address: _____

Contractor: _____ Phone: _____ E-mail: _____

Notes: _____

Architectural Firm: _____ Project Architect: _____

- Approved
- Not Approved

Remarks: _____
