



# Product Submittal

## Flash-Vent™ Copper

### Description

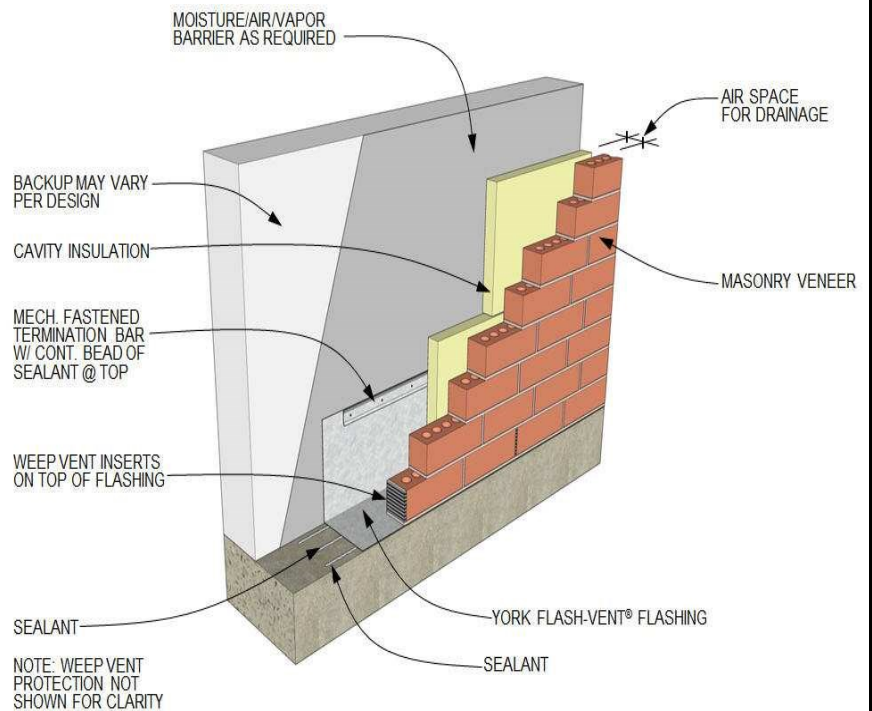
Copper fabric drainage plane flashing. Does not clog, eliminating the need for mortar netting. Compatible with air barriers, spray polyurethane foams, cavity wall insulations, and construction sealants.

### Description & Benefits:

- Drainage plane flashing
- Best in class puncture resistance
- Mold resistant: passes ASTM D3273
- Fire resistant: passes ASTM E84, Class A
- Life of the wall warranty
- Compatible with:
  - Air barriers
  - Spray Polyurethane Foam
  - Cavity wall insulations
  - Construction sealants
- Does not clog with mortar
- Eliminates need for mortar netting

### Copper:

- Made of 90% recycled copper
- Copper: Meets ASTM B370-II
- Available in:
  - AB, standard air barrier
  - 3 oz., industrial
  - 5 oz., heavy duty



### Accessories:

- |  |  |
|--|--|
| <input type="checkbox"/> UniverSeal US-100 Sealant       | <input type="checkbox"/> York 304 Self-Adhering Tape               |
| <input type="checkbox"/> T-96 Termination Bar            | <input type="checkbox"/> Stainless Steel Drip Edge                 |
| <input type="checkbox"/> SS Termination Bar              | <input type="checkbox"/> Drip Edge Stainless Steel Outside Corners |
| <input type="checkbox"/> Term-Clamp™                     | <input type="checkbox"/> Drip Edge Stainless Steel Inside Corners  |
| <input type="checkbox"/> Stainless Steel Outside Corners | <input type="checkbox"/> Stainless Steel Weep Vents                |
| <input type="checkbox"/> Stainless Steel Inside Corners  | <input type="checkbox"/> Weep-Net™ (Optional)                      |
| <input type="checkbox"/> Stainless Steel End Dams        | <input type="checkbox"/> Weep Armor™ (Optional)                    |

Submittal Date: \_\_\_\_\_ Bid Date: \_\_\_\_\_

Project: \_\_\_\_\_

Project Address: \_\_\_\_\_

Contractor: \_\_\_\_\_ Phone: \_\_\_\_\_ E-mail: \_\_\_\_\_

Notes: \_\_\_\_\_

Architectural Firm: \_\_\_\_\_ Project Architect: \_\_\_\_\_

- Approved
- Not Approved

Remarks: \_\_\_\_\_