



# Hydra-Vent™

## Water Resistant Barrier and Active Drainage Plane Combined For Manufactured Stone, Stucco and Thin Brick

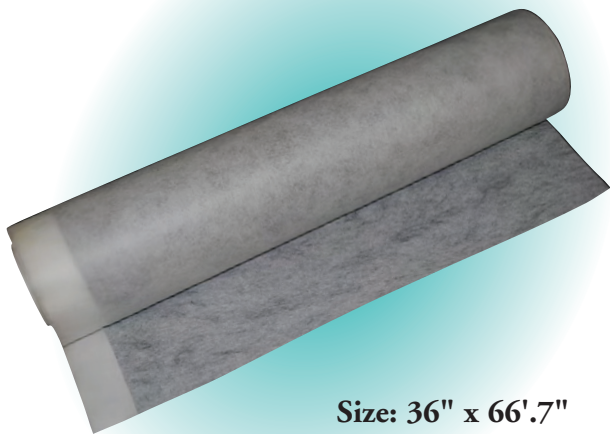
### Key Properties

#### Active Drainage Plane

- Quickly transports water to flashings and screed exit points
- Creates a capillary break to equalize pressure within the wall unit
- Will not clog with mortar
- Will not support mold growth

#### Polymeric Water Resistant Barrier

- Allows water vapor to escape from interior walls
- Reduces the loss of heated or cooled air from the wall cavity
- Resistant to chemicals, cleaners and cedar oil
- ICC-ES Meets AC38 (ESR-2235)



Size: 36" x 66'.7"  
200 SQ FT

### Benefits

- One step installation of water resistant barrier and drainage plane
- Installs like conventional water resistant barriers
- No need for thickness shimming around doors and windows
- No need to install insect barrier

### Installation

- Grey fabric faces out.
- Apply first water resistant barrier according to local codes.
- Apply Hydra-Vent™ **after** installation of doors, windows and related flashings.
- Starting at the bottom horizontal course install Hydra-Vent™ with grey fabric facing out and 3" overlapping edge at the top, fasten with staples or nails according to local building codes.
- Trim Hydra-Vent™ around windows, doors, vents and penetrations.

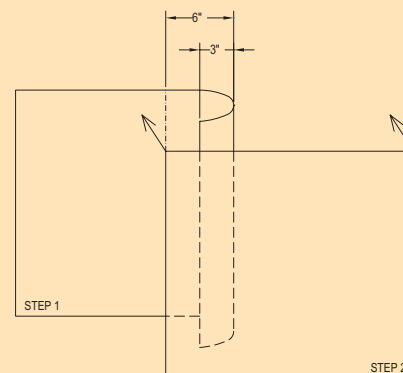
### Corners

- Start Hydra-Vent™ a minimum of 12" away from corners.
- Install lath on top of Hydra-Vent™ for stucco, stone or thin brick applications.

### Vertical Laps

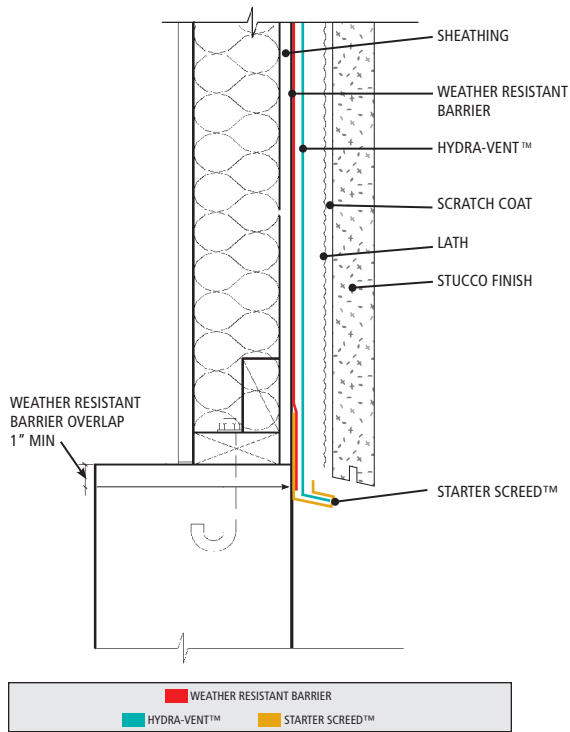
**Step 1** Fold the ending vertical section of Hydra-Vent™ onto itself a minimum of 3" and staple.

**Step 2** Continue with next roll of Hydra-Vent™ vertically lapping previous fold 6".

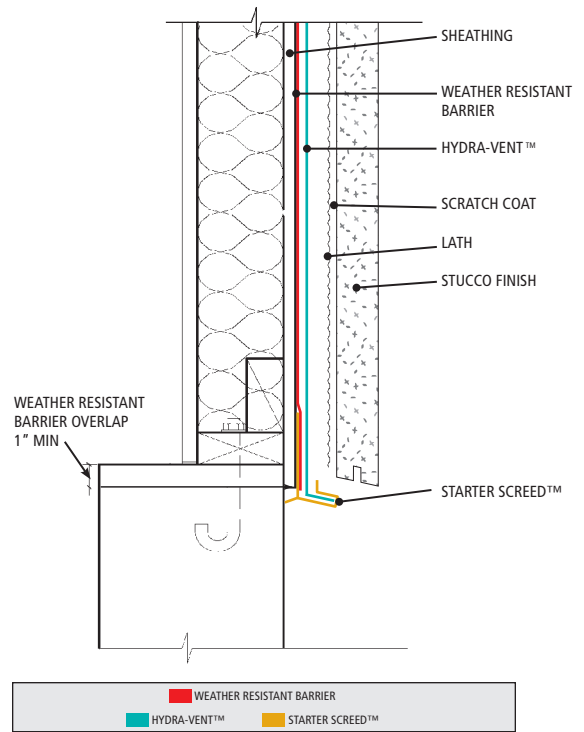


Drawings Have Been Expanded For Clarity

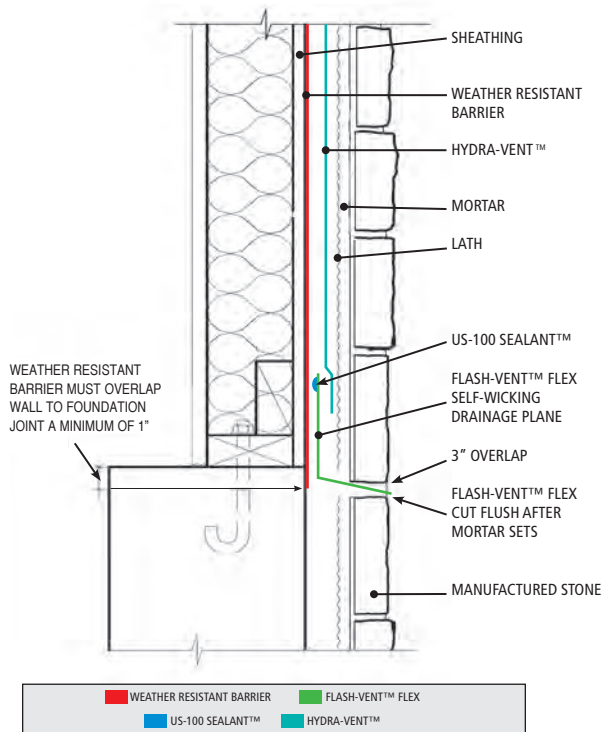
**STUCCO WALL TO FOUNDATION TERMINATION**  
(EXTERIOR SHEATHING IS FLUSH WITH FOUNDATION)



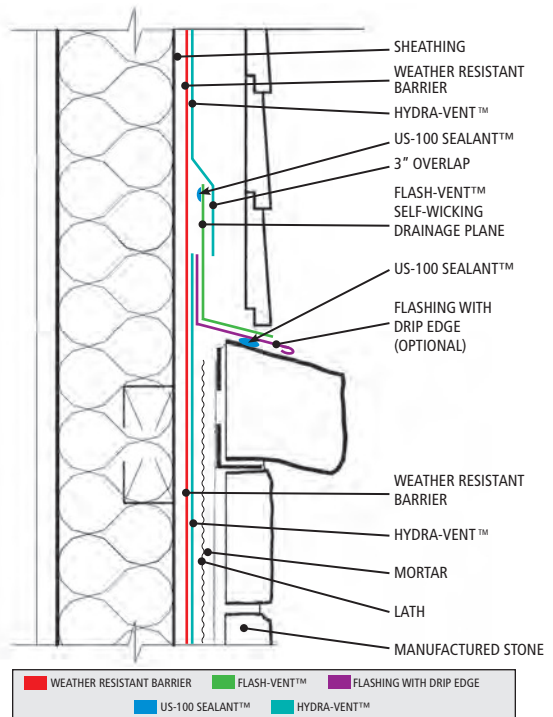
**STUCCO WALL TO FOUNDATION TERMINATION**  
(EXTERIOR SHEATHING IS OVER FOUNDATION)



**WALL TO FOUNDATION TRANSITION**



**CLADDING TRANSITION**



To learn more or place an order, call your nearest dealer or York at 1-800-551-2828