



# Starter Screed

A Full Functioning Weep  
Screed with a Universal  
Design For Stucco,  
Manufactured Stone and  
Thin Brick



## Features and Benefits

- Full length stucco key
- High flow weep ports will match flow rates of water intrusion
- Adapts to most construction designs
- Unique weep slot design
- High impact and UV resistant
- Directs water away from foundation
- Meets ASTM D 1784 and D4216

## Instructions

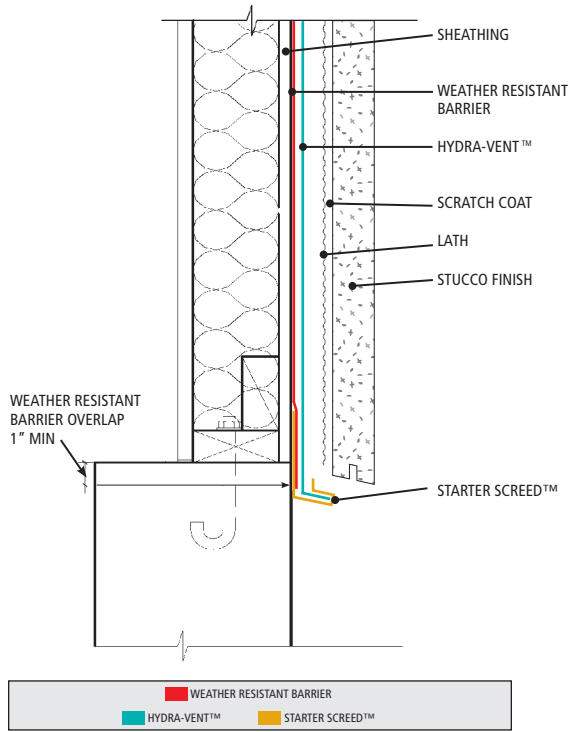
- Place starter screed a minimum of 4" above grade or 2" above paved areas.
- Fasten starter screed through sheathing and into wall studs.
- **IMPORTANT**, Hydra-Vent and lath should overlap nailing flange of screed.
- Slide bottom section of Hydra-Vent or WRB into starter screed weep slot.
- **Do not** plug weep ports on leading edge of screed with stucco mix.
- Score underside groove and remove back leg of screed for flush sheathing application or termination bead.



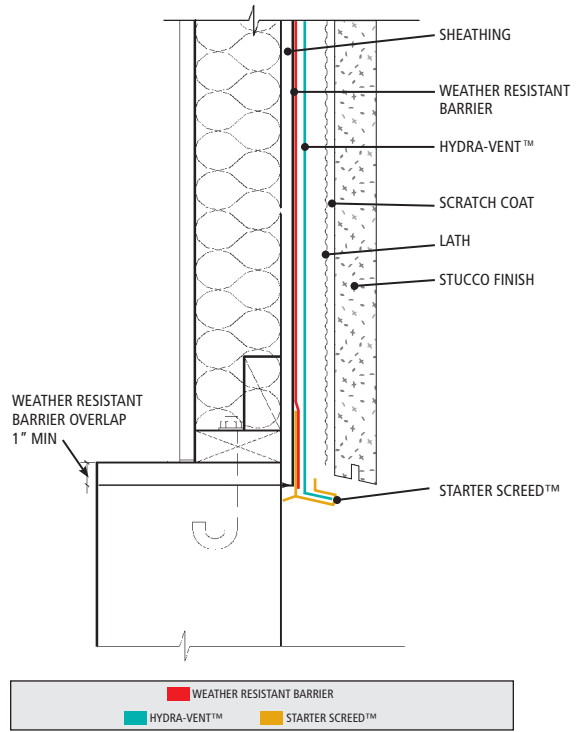
**YORK**  
Since 1935

## Drawings Have Been Expanded For Clarity

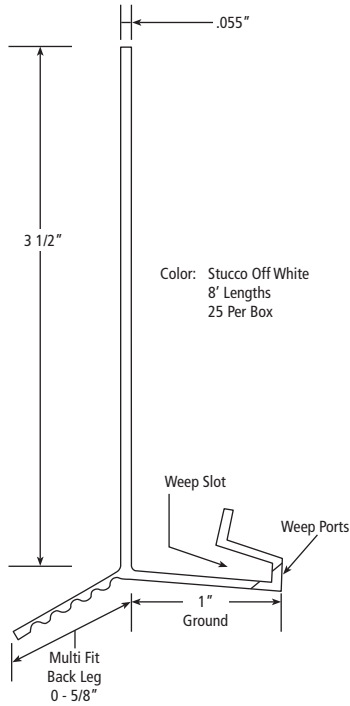
**STUCCO WALL TO FOUNDATION TERMINATION  
(EXTERIOR SHEATHING IS FLUSH WITH FOUNDATION)**



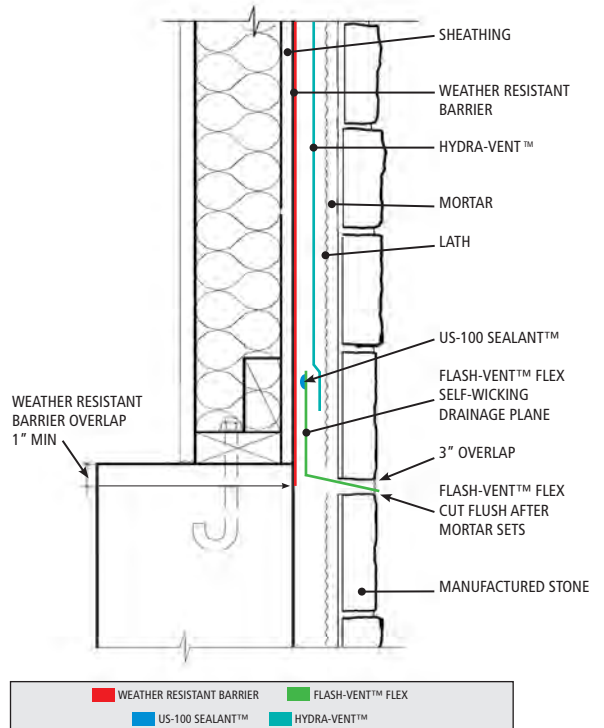
**STUCCO WALL TO FOUNDATION TERMINATION  
(EXTERIOR SHEATHING IS OVER FOUNDATION)**



**STARTER SCREED**



**WALL TO FOUNDATION TRANSITION  
DRAWING HAS BEEN EXPANDED FOR CLARITY**



*To learn more or place an order, call your nearest dealer or York at 1-800-551-2828*



York Manufacturing, Inc. • 43 Community Drive, Sanford, ME 04073  
Tel: 800-551-2828 • Fax: 888-819-2592 • info@yorkmfg.com • www.yorkmfg.com