

Since January 1, 2004, the EPA has mandated that pressure treated lumber be arsenic-free. But the ACQ treatment replacing arsenic-based chemical preservatives contains a higher level of copper...causing a galvanic reaction that will corrode, degrade, and destabilize the integrity of aluminum flashing. That's why you need YorkShield 106 TS™



ACQ treatment corrodes aluminum flashing



YorkShield 106 TS copper flashing won't corrode with ACQ treatment

More YorkShield 106 TS™ Advantages:

- Everlam™ technology enables polymer layer that seals around fasteners to form a protective barrier
- Affordably priced with far better performance than aluminum
- Flexible and easy to use on foundations and basement posts
- Warranted for the life of the building*

YorkShield 106 TS™

Laminated Copper Termite Barrier

**NEW
ASPHALT-FREE
NON-STAINING
FORMULA**



Keep termites out. Put YorkShield 106 TS™ in.

- Provides superior protection against termites and other insects
- Compatible with **ACQ** and all other treatments for pressure treated lumber
- New asphalt-free 100% rubber adhesive **will not stain** concrete, vinyl or wood
- Compatible with all adhesives, caulks and sealants
- Thermal stability to 275°F

YORK
Since 1935

Description

YorkShield 106 TS™ is a copper termite barrier solution, made of a single sheet of 2 oz. copper and a tough polymer layer, laminated with 100% rubber adhesive. This composite material is supplied in 60' rolls, 8", 10" or 12" wide.

The copper is flexible, easily formed on-site and the rubberized laminate offers excellent protection from the chemically treated wood. Unlike aluminium termite shields, YorkShield 106 TS will not corrode or degrade when exposed to ACQ and other treatments.

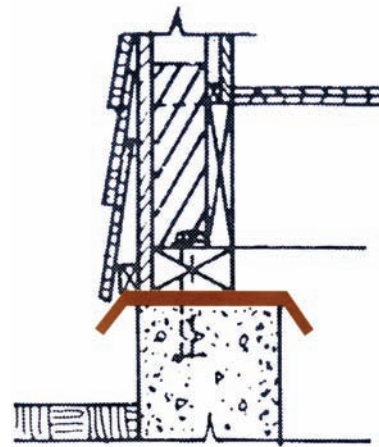
Tested

The product has been tested and proven compatible with ACQ treated woods by Chemical Specialties Inc. of Charlotte, NC., a manufacturer of ACQ treatment chemicals.

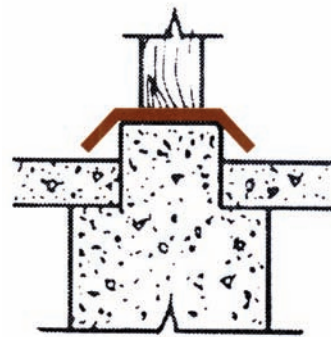
Installation Notes

Install YorkShield 106 TS between the foundation and the sill plate with the copper side up. The foundation and sill surfaces should be as smooth as is practical to avoid puncturing the barrier during installation.

Cut pieces as long as possible to minimize joints. Lap joints 6" to ensure there are no gaps that could enable termite access. The edge of flashing should extend approximately 2" beyond the edge of the foundation, and turned down at a 45° angle. It is recommended that all penetrations and laps are sealed with mastic or caulk, as termites require as little as 1/64" to gain access.



Foundation



Basement Post

Note: polymer layer is an integral part of the composite material and should not be removed.

YORKSHIELD 106 TS™ SHOULD BE USED AS A TERMITE SHIELD ONLY, NOT AS FLASHING. FOR FLASHING APPLICATIONS, USE OUR YORKSHIELD 106 PT™ OR YORKSHIELD 106 HP™ FLASHING PRODUCTS.

*Limited Warranty

York Manufacturing, Inc. warrants this product to be free of defects in workmanship and materials for the life of the structure. If any product proves to contain manufacturing defects that substantially affect its performance, York Manufacturing, Inc. will, at its option, replace it or refund its purchase price.

This limited warranty is the only warranty extended by York Manufacturing, Inc. with respect to its materials. There are no other warranties, including the implied warranties of merchantability and fitness for a particular purpose. York Manufacturing, Inc. specifically disclaims liability for any incidental, consequential, or other damages, including but not limited to loss of profits or damages to a structure or its contents, arising under any theory of law whatsoever. The dollar value of York Manufacturing, Inc. liability and buyer's remedy under this limited warranty shall not exceed the purchase price of the product in question.

For other installation details, samples, specifications and dealer information, call York Manufacturing at 800-551-2828 or visit www.yorkmfg.com.

