



HomeSeal™

25 mil Self-Adhering Flashing Membrane

Key Properties

- **Terrific Adhesion**
- **Cross Laminated Poly Facer (Tough to Tear)**
- **Low Temperature Adhesion**
- **High Temperature Stability**
- **Individually Packaged and Bar Coded**

Description

York HomeSeal is a proprietary, self-adhering composite membrane, uniquely combining high strength, low temperature adhesion and high temperature stability into a superior barrier to limit air and moisture transmission. A tough 5mil (0.1mm) high density polyethylene film forms a resilient barrier to physical damage. The 20 mils (0.9mm) of proprietary, modified asphalt offers the waterproofing effectiveness of traditional modified bitumen products while introducing a novel combination of low temperature adhesion and high temperature stability.

York HomeSeal composite is 25 mils (1.0mm) thick and is supplied in rolls of 75' long, custom slit to 4", 6", 9" or 12" widths. **York HomeSeal** is self-adhering and cold-applied. No special adhesives, heat or equipment are necessary to install **York HomeSeal**.

Uses

York HomeSeal is used to prevent vapor and air transmission through masonry curtain walls, construction joints and fittings around doors and windows. Acceptable surfaces include plywood, lumber, precast concrete, metal and concrete block.

Application

Substrate Preparation

- All surfaces must be clean, dry and smooth. Structural concrete should be cured a minimum of 7 days.

Primer

- **If needed** prime surface with solvent or Emulsion Base Primer. Allow primer to dry completely before installing **York HomeSeal** membrane.

Application

- Cut **York HomeSeal** into manageable lengths. Remove the release sheet. Apply membrane from the lowest point upward, overlapping horizontal edges in shingle fashion. Roll membrane firmly to insure uniform contact with substrate. Overlaps should be sufficient to insure consistent adhesion to the substrate. Reinforcing strips on all inside and outside corners as well as mechanical fastening to door and window frames is strongly recommended. Seal all terminations, detailing and protrusions.
- **York HomeSeal** is formulated to be installed in ambient temperatures of 40°F and above. When applying **York HomeSeal** in ambient temperatures below 40°F, store **York HomeSeal** at room temperature until use and prime the substrate with primer to insure good initial adhesion.
- **York HomeSeal** should not be left exposed for more than 30 days.

YORK
Since 1935



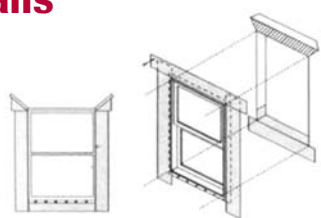
**TECHNICAL DATA
YORK HOMESeal**

PROPERTY	MINIMUM VALUE	TEST METHOD
Tensile Strength, film	6.0 lbs/lin. inch	ASTM D 412
Elongation to Break (rubberized asphalt)	320%	ASTM D 412
Pliability, 180°, 1" mandrel -25°F (-4°C)	Pass	ASTM D 146
Peel Adhesion, Dry (concrete)	5 lb/in	ASTM D 903
Puncture Resistance	50 lbs	ASTM E 154
Permeance	0.05 perms (max)	ASTM E 96B
Water Absorption	0.1% by weight (max)	ASTM D 570

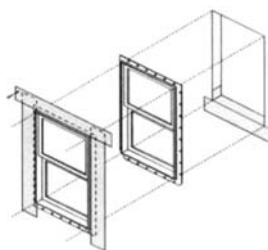
Safety, Storage and Handling

Pallets of membrane shall not be double stacked on the job site. Provide cover on top and sides, allowing for adequate ventilation. Avoid prolonged and repeated contact with the skin. Consult the Material Safety Data Sheet for the best available information on the safe handling, storage, personal protection, health and environmental considerations.

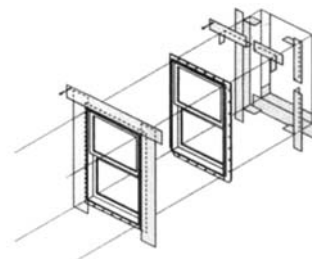
Details



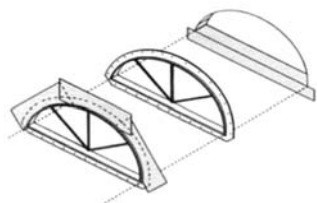
Flanged Window
Flashing Installation AFTER
Weather-Resistive Barrier



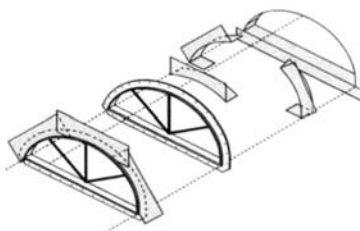
Flanged Window
Flashing Installation BEFORE
Weather-Resistive Barrier
Option 1 – Low Exposure



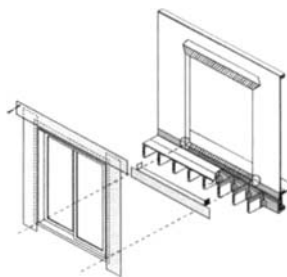
Flanged Window
Flashing Installation BEFORE
Weather-Resistive Barrier
Option 3 – Low Exposure



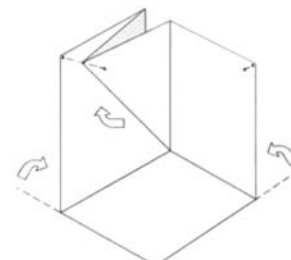
Half Round Window
Option 1 – Low to Moderate Exposure



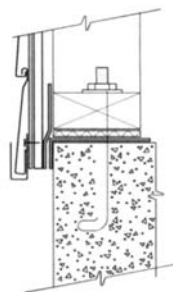
Half Round Window
Option 2 – Severe Exposure



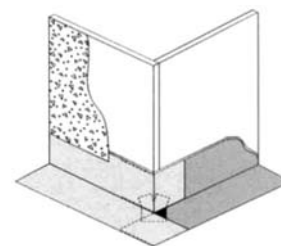
Exterior Sliding Door
with Deck



Inside Corner



Foundation Sill Plate
Option 1



Outside Corner

